

# C18-A15PT

1 pole | 5-pin | changeover contact | Grid 3.5mm

<b>Maximum contact load</b>	<b>10 A/250V AC-1</b>
	<b>10 A/30V DC-1</b>
<b>Recommended minimum contact load</b>	<b>1 mA/1V AC/DC</b>

### Contacts

Material	⚡ AgSnO <sub>2</sub>
Rated Load	10 A
Switching voltage max.	250V
Max. inrush current (500ms)	25 A
Bounce time	2 ms

### Coil

Coil resistance	see table; tolerance ± 10 %
Pick-up voltage	75 % of U <sub>N</sub> (DC) / 80 % of U <sub>N</sub> (AC)
Release voltage	≤ 0.1 U <sub>N</sub> (DC) / ≤ 0.3 U <sub>N</sub> (AC)
Nominal power	1 VA (AC) / 0.53 W (DC) @ 23 °C

### Coil Data (DC voltage)

Coil Voltage Code	Nominal Voltage (VDC)	Coil Resistance (Ω) ± 10 %	Must operate voltage max. (VDC)	Must release voltage min (VDC)
12	12	270	9.00	1.2
24	24	1080	18.00	2.4
36	36	1350	27.00	3.6
48	48	4340	36.00	4.8
110	110	22830	82.5	11

### Coil Data (AC voltage 50/60 Hz)

Coil Voltage Code	Nominal Voltage (VAC)	Coil Resistance (Ω) ± 10 %	Must operate voltage max. (VAC)	Must release voltage min (VAC)	Max. allowable voltage (VAC)
24	24	253	19.2	7.2	26.4
110	110	5819	88.0	33	121
230	230	23276	184	69	253

### Insulation

Insulation resistance (coil to contact)	≥ 100 MΩ @ 500 V DC, 50% RH
Dielectric strength	5 kV
Contact/coil	5000 Vrms, 1 min
Contact/contact	1000 Vrms, 1 min

### Specifications

Ambient temperature operation/storage	-55 ... 70 °C / -55 ... 70 °C (no ice)
Pick-up time	10 ms
Release time	5 ms
Mechanical/electrical life ops	≥ 1 × 10 000 000 / 1 × 100 000
Weight	17 g
Max. switching frequency	20 Hz
Tightness	RT2

### Product References

**V AC 50 Hz/60 Hz: 24, 110 (120), 230 (240)**  
**V DC 12, 24, 36, 48, 110**

**C18-A15PT/AC...V**  
**C18-A15PT/DC...V**

Other voltages on request

"..." List Coil Voltage to complete Product References

### Accessories

Socket	<b>S18-M</b>
Retaining clip, plastic	<b>CP-16</b>
Modules	<b>See datasheet socket S18-M</b>



### Connection diagram

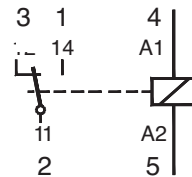
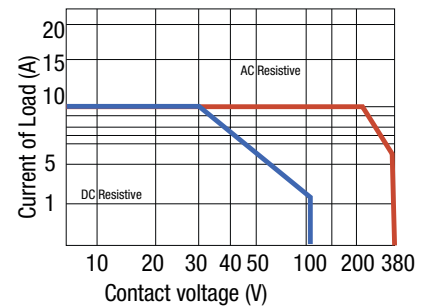
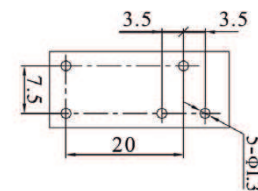
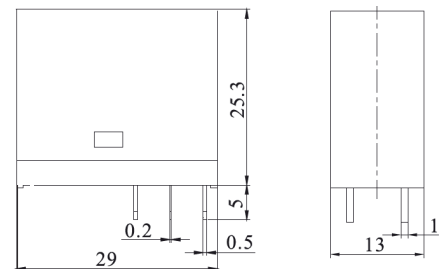


fig. 1 Max. Operating Power Curve



### Dimensions (mm)



Standard

### Technical approvals, conformities



IEC/EN 61810; IEC/EN 60947

# C18-A15PTL

1 pole | 5-pin | changeover contact | Grid 5mm

<b>Maximum contact load</b>	<b>10 A/250V AC-1</b>
	<b>10 A/30V DC-1</b>
<b>Recommended minimum contact load</b>	<b>1 mA/1V AC/DC</b>

### Contacts

Material	⚡ AgSnO <sub>2</sub>
Rated Load	10A
Switching voltage max.	250V
Max. inrush current (500 ms)	25A
Bounce time	2 ms

### Coil

Coil resistance	see table; tolerance ± 10 %
Pick-up voltage	75 % of U <sub>N</sub> (DC) / 80 % of U <sub>N</sub> (AC)
Release voltage	≤ 0.1 U <sub>N</sub> (DC) / ≤ 0.3 U <sub>N</sub> (AC)
Nominal power	1 VA (AC) / 0.53 W (DC) @ 23 °C

### Coil Data (DC voltage)

Coil Voltage Code	Nominal Voltage (V DC)	Coil Resistance (Ω) ± 10 %	Must operate voltage max. (VDC)	Must release voltage min (VDC)
12	12	270	9.00	1.2
24	24	1080	18.00	2.4
36	36	1350	27.00	3.6
48	48	4340	36.00	4.8
110	110	22830	82.5	11

### Coil Data (AC voltage 50/60Hz)

Coil Voltage Code	Nominal Voltage (V AC)	Coil Resistance (Ω) ± 10 %	Must operate voltage max. (V AC)	Must release voltage min (V AC)	Max. allowable voltage (V AC)
24	24	253	19.2	7.2	26.4
110	110	5819	88.0	33	121
230	230	23276	184	69	253

### Insulation

Insulation resistance (coil to contact)	≥ 100 MΩ @ 500V DC, 50% RH
Dielectric strength	5 kV
Contact/coil	5000 Vrms, 1 min
Contact/contact	1000 Vrms, 1 min

### Specifications

Ambient temperature operation/storage	-55 ... 70 °C / -55...70 °C (no ice)
Pick-up time	10 ms
Release time	5 ms
Mechanical/electrical life ops	≥ 1 × 10 000 000 / 1 × 100 000
Weight	17 g
Max. switching frequency	20 Hz
Tightness	RT2

### Product References

**V AC 50 Hz/60 Hz: 24, 110 (120), 230 (240)**  
**V DC 12, 24, 36, 48, 110**

**C18-A15PTL/AC...V**  
**C18-A15PTL/DC...V**

Other voltages on request

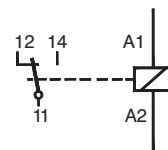
"..." List Coil Voltage to complete Product References

### Accessories

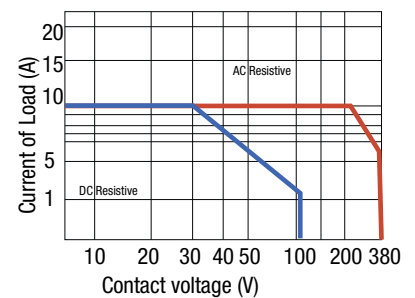
Socket	<b>S16-M</b>
Retaining clip, plastic	<b>CP-16</b>
Modules	<b>See datasheet socket S16-M</b>



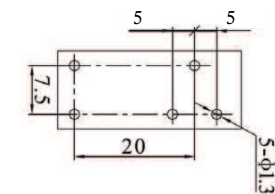
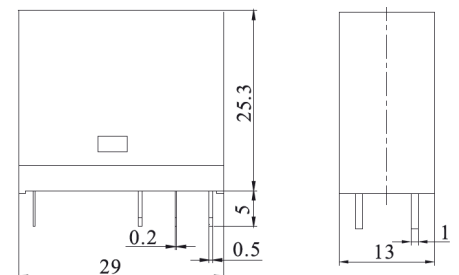
### Connection diagram



**fig. 1 Max. Operating Power Curve**



### Dimensions (mm)



Standard

### Technical approvals, conformities



IEC/EN 61810; IEC/EN 60947

# C18-B15PTL

1 pole | 8-pin | changeover contact | Grid 5mm



<b>Maximum contact load</b>	<b>16 A/250V AC-1</b>
	<b>16 A/30V DC-1</b>
<b>Recommended minimum contact load</b>	<b>1 mA/1V AC/DC</b>

### Contacts

Material	⚡ AgSnO <sub>2</sub>
Rated Load	16A
Switching voltage max.	250V
Max. inrush current (500ms)	25A
Bounce time	2ms

### Coil

Coil resistance	see table; tolerance ± 10 %
Pick-up voltage	75 % of U <sub>N</sub> (DC) / 80 % of U <sub>N</sub> (AC)
Release voltage	≤ 0.1 U <sub>N</sub> (DC) / ≤ 0.3 U <sub>N</sub> (AC)
Nominal power	1 VA (AC) / 0.53 W (DC) @ 23 °C

### Coil Data (DC voltage)

Coil Voltage Code	Nominal Voltage (VDC)	Coil Resistance (Ω) ± 10 %	Must operate voltage max. (VDC)	Must release voltage min (VDC)
12	12	270	9.00	1.2
24	24	1080	18.00	2.4
36	36	1350	27.00	3.6
48	48	4340	36.00	4.8
110	110	22830	82.5	11

### Coil Data (AC voltage 50/60 Hz)

Coil Voltage Code	Nominal Voltage (VAC)	Coil Resistance (Ω) ± 10 %	Must operate voltage max. (VAC)	Must release voltage min (VAC)	Max. allowable voltage (VAC)
24	24	253	19.2	7.2	26.4
110	110	5819	88.0	33	121
230	230	23276	184	69	253

### Insulation

Insulation resistance (coil to contact)	≥ 100 MΩ @ 500 V DC, 50% RH
Dielectric strength	5 kV
Contact/coil	5000 Vrms, 1 min
Contact/contact	1000 Vrms, 1 min

### Specifications

Ambient temperature operation/storage	-55 ... 70 °C / -55 ... 70 °C (no ice)
Pick-up time	10ms
Release time	5ms
Mechanical/electrical life ops	≥ 1 × 10 000 000 / 1 × 100 000
Weight	17g
Max. switching frequency	20Hz
Tightness	RT2

### Product References

**V AC 50 Hz/60 Hz: 24, 110 (120), 230 (240)**  
**V DC 12, 24, 36, 48, 110**

**C18-B15PTL/AC...V**  
**C18-B15PTL/DC...V**

Other voltages on request

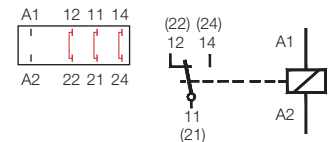
"..." List Coil Voltage to complete Product References

### Accessories

Socket	<b>S16-M</b>
Retaining clip, plastic	<b>CP-16</b>
Modules	<b>See datasheet socket S16-M</b>

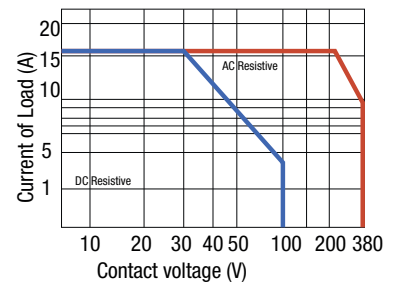


### Connection diagram

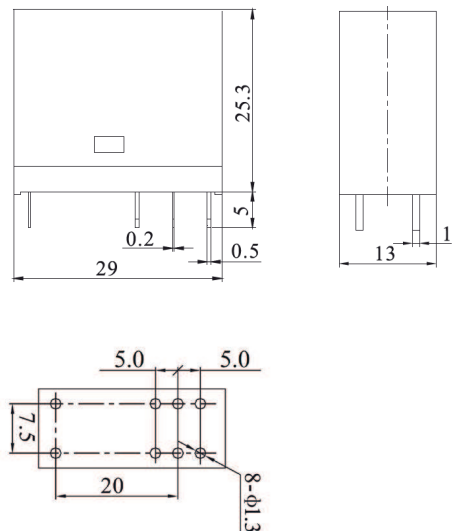


**⚠** For usage of the relay up to 16A, pin 22+12 (open), pin 21+11 (common) and pin 24+14 (closing) need to be bridged on the socket terminals to prevent overheating. Each contact on this relay is connected to two pins each.

**fig. 1 Max. Operating Power Curve**



### Dimensions (mm)



### Technical approvals, conformities



IEC/EN 61810; IEC/EN 60947

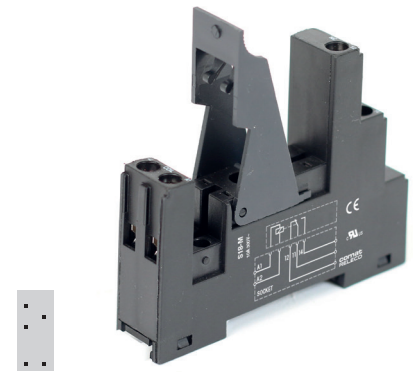
## S18-M

### Socket for 8-pin Relays

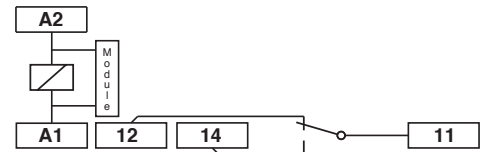
<b>Rated Load</b>	<b>10 A / 300 V</b>
<b>Specifications</b>	
Rated impulse withstand voltage	3 kV rms / 1 min
- All terminals / DIN rail	3 kV rms / 1 min
- Terminal / Terminal	3 kV rms / 1 min
- Terminal / Coil	3 kV rms / 1 min
Cross-section of connecting wire	
- Single-wire	1 × 0.5 mm <sup>2</sup> / AWG 20
- Multi-wire	1 × 2.5 mm <sup>2</sup> / AWG 14 or 2 × 1.0 mm <sup>2</sup> / AWG 18
Nominal screw torque	0.7 Nm
Screw Dimensions (mm)	M3 Pozzi 1 slot 2
Mounting	TS-35 or Back Panel Mounting
Ambient temperature	-40 ... 60 °C / -40 ... 80 °C (no ice)
Weight	42 g

<b>Included Accessories</b>	
Retaining / Ejector clip, plastic	CP-16

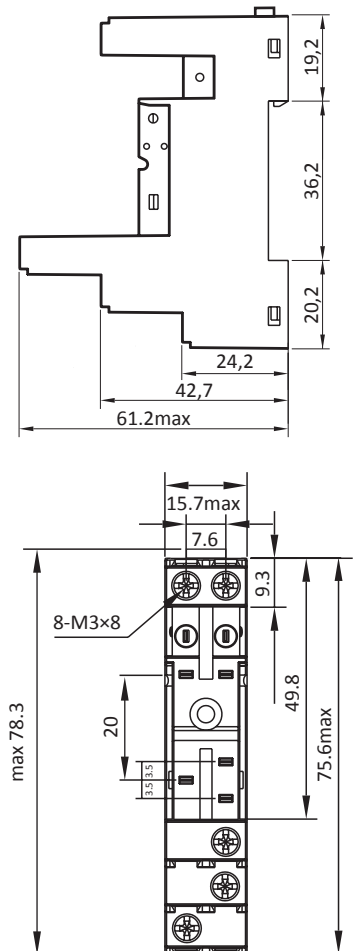
<b>Optional Accessories (modules)</b>	
Free wheeling diode	RD16/DC12-240V
Green LED & free wheeling diode, 6-24V DC	RDL16/DC6-24V
Green LED & free wheeling diode, 24-60V DC	RDL16/DC24-60V
Green LED & free wheeling diode, 110-240V DC	RDL16/DC110-240V
Green LED, 6-24V AC/DC	RL16/UC6-24V
Green LED, 24-60V AC/DC	RL16/UC24-60V
Green LED, 110-240V AC/DC	RL16/UC110-240V
RC-Network 6-24V	RC16/UC6-24V
RC-Network 24-60V	RC16/UC24-60V
RC-Network 110-240V	RC16/UC110-240V



#### Connection diagram



#### Dimensions (mm)



#### Technical approvals, conformities

