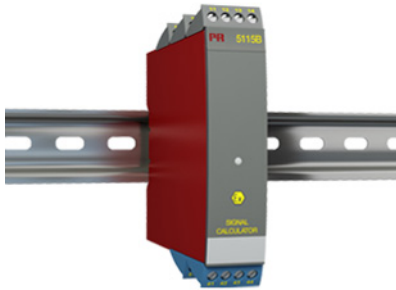


Ex signal calculator



5115B

- Redundancy measurement with 2 input signals
- Signal calculator with the four arithmetical operations
- Duplication of the input signal
- Input for RTD, Ohm, TC, mV, mA, and V
- Universal supply by AC or DC



Application

- Redundancy measurement of temperature by means of two sensors, where the secondary sensor takes over the measurement when a sensor error occurs on the primary sensor.
- Duplication of the input signal, e.g. from a temperature sensor or an analog process signal to two separate analog outputs.
- Signal calculator with four arithmetical operations: Addition, subtraction, multiplication and division.
- Example: Differential measurement: $(\text{Input 1} * K1) - (\text{Input 2} * K2) + K4$
- Example: Average measurement: $(\text{Input 1} * 0.5) + (\text{Input 2} * 0.5) + K4$
- Example: Different functions on the outputs: Output 1 = input 1 - input 2, and Output 2 = input 1 + input 2
- I.S. safety barrier and power supply for 2-wire transmitters.

Technical characteristics

- Within a few seconds the user can program PR5115B to a selected application using the configuration program PReset.
- A green front LED indicates normal operation, sensor error on each sensor, and functional error.
- 5-port 3.75 kVAC galvanic isolation.

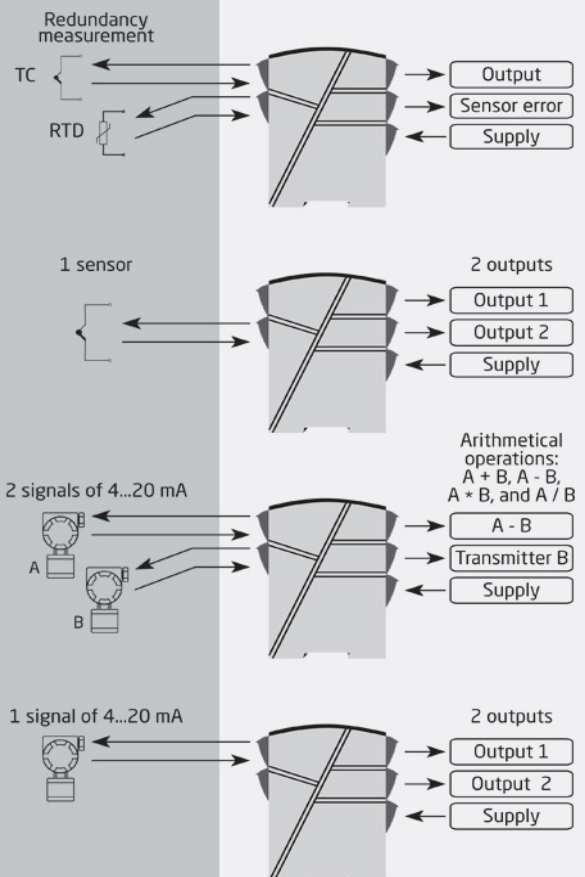
Mounting / installation

- Mounted vertically or horizontally on a DIN rail. As the devices can be mounted without any distance between neighboring units, up to 42 devices can be mounted per meter.

Note

- Not suitable for new installations requiring certification to the latest ATEX standards - see ATEX certificate DEMKO 00ATEX128567 and EU Declaration of Conformity for details.

Applications



Order:

Type	Input
5115B	RTD / TC / mV / R : 1
	mA / V / mV : 2
	Input 1, RTD / TC / mV / R : 3
	Input 2, mA / V / mV

*NB! Please remember to order CJC connectors type 5910Ex (input 1) and 5913Ex (input 2) for TCinputs with an internal CJC.

Environmental Conditions

Operating temperature.....	-20°C to +60°C
Calibration temperature.....	20...28°C
Relative humidity.....	< 95% RH (non-cond.)
Protection degree.....	IP20

Mechanical specifications

Dimensions (HxWxD).....	109 x 23.5 x 130 mm
Weight approx.....	225 g
DIN rail type.....	DIN EN 60715/35 mm
Wire size.....	0.13...2.08 mm ² AWG 26...14 stranded wire
Screw terminal torque.....	0.5 Nm
Vibration.....	IEC 60068-2-6
2...13.2 Hz.....	±1 mm
13.2...100 Hz.....	±0.7 g

Common specifications**Supply**

Supply voltage, universal.....	21.6...253 VAC, 50...60 Hz or 19.2...300 VDC
Fuse.....	400 mA SB / 250 VAC
Max. required power.....	2.1 W / 2.8 W (1 / 2 ch.)
Max. power dissipation.....	2.0 W

Isolation voltage

Isolation voltage, test / working.....	3.75 kVAC / 250 VAC
PELV/SELV.....	IEC 61140

Response time

Temperature input, programmable (0...90%, 100...10%).....	400 ms...60 s
mA / V input (programmable).....	250 ms...60 s
Programming.....	Loop Link
Signal / noise ratio.....	Min. 60 dB (0...100 kHz)
Accuracy.....	Better than 0.05% of selected range
Updating time.....	115 ms (temperature input)
Updating time.....	75 ms (mA / V / mV input)
Redundancy switch-over time.....	≤ 400 ms
Signal dynamics, input.....	22 bit
Signal dynamics, output.....	16 bit
Auxiliary voltages: Reference voltage.....	2.5 VDC ±0.5% / 15 mA
EMC immunity influence.....	< ±0.5% of span
Extended EMC immunity: NAMUR NE21, A criterion, burst.....	< ±1% of span

Input specifications**Common input specifications**

Max. offset.....	50% of selected max. value
------------------	----------------------------

RTD input

RTD type.....	Pt46, Pt100, Ni100, Cu53, lin. R
Cable resistance per wire.....	10 Ω (max.)
Sensor current.....	Nom. 0.2 mA
Effect of sensor cable resistance (3-/4-wire).....	< 0.002 Ω / Ω
Sensor error detection.....	Yes

TC input

Thermocouple type.....	B, E, J, K, L, N, R, S, T, U, W3, W5, LR
Cold junction compensation (CJC).....	< ±1.0°C
Sensor error current.....	Nom. 30 µA

Current input

Measurement range.....	0...100 mA
Min. measurement range (span).....	4 mA
Input resistance: Supplied unit.....	Nom. 10 Ω + PTC 10 Ω
Input resistance: Non-supplied unit.....	RSHUNT = ∞, VDROPO < 6 V

Voltage input

Measurement range.....	0...250 VDC
Min. measurement range (span).....	5 mV
Input resistance.....	Nom. 10 MΩ (≤ 2.5 VDC)
Input resistance.....	Nom. 5 MΩ (> 2.5 VDC)
Input resistance.....	Nom. 10 MΩ (mV input)

mV input

Measurement range.....	-150...+150 mV
------------------------	----------------

Output specifications**Current output**

Signal range.....	0...20 mA
Min. signal range.....	10 mA
Load (@ current output).....	≤ 600 Ω
Load stability.....	≤ 0.01% of span / 100 Ω
Current limit.....	≤ 28 mA
Sensor error indication.....	Programmable 0...23 mA
NAMUR NE43 Upscale/Downscale.....	23 mA / 3.5 mA

Voltage output

Signal range.....	0...10 VDC
Min. signal range.....	500 mV
Load (@ voltage output).....	≥ 500 kΩ

Passive 2-wire mA output

Signal range.....	4...20 mA
Load stability.....	≤ 0.01% of span / 100 Ω
Effect of external 2-wire supply voltage variation.....	< 0.005% of span / V
Max. external 2-wire supply.....	29 VDC
of span.....	= of the presently selected range

Observed authority requirements

EMC.....	2014/30/EU
LVD.....	2014/35/EU
ATEX.....	2014/34/EU
RoHS.....	2011/65/EU
EAC.....	TR-CU 020/2011
EAC Ex.....	TR-CU 012/2011

Approvals

ATEX.....	DEMKO 00ATEX128567, II (1) GD [EEx ia] IIC
EAC Ex.....	RU C-DK.HA65.B.00355/19
DNV Marine.....	TAA0000101